

2025

LEOTI KANSAS MAGAZINE



“CHEYENNE AT THE DISAPPEARING WHITE WOMAN CREEK” BY HOWARD TERPNING, DISPLAYED AT THE MUSEUM OF THE GREAT PLAINS.

CONTENTS

- 2 - ABOUT LEOTI
- 3 - AGORA: THE GATHERING PLACE
- 4-5 - R.O.Z. PROGRAM
- 6 - RECREATION
- 7 - PLACES TO EAT
- 8 - PLACES TO SHOP
- 9 - OTHER FEATURES
- 10 - CLUBS, GROUPS, ETC.
- 11 - HEALTH CARE
- 12 - CHURCHES
- 13 - EDUCATION
- 14 - EVENTS
- 15 - WICHITA COUNTY FAIR
- 16 - AGRICULTURE
- 17-19 - BUSINESS DIRECTORY

LEOTI

Nestled in the farm country of Western Kansas, one can find the peaceful town of Leoti. Founded in 1885, Leoti is a warm and welcoming community with safe neighborhoods, excellent educational and health care services, and great business opportunities. Residents here find comfort in the simple rural lifestyle that comes with living so close to nature. Visitors to Leoti are enthralled with its rich and wild western history. From cozy local restaurants to nearby parks, there's something special around every corner.

THE TOWN IS FULL OF FRIENDLY PEOPLE WHO ARE HAPPY TO HELP THEIR NEIGHBORS AND VISITORS!

PHOTO COURTESY OF KIERSTEN DIRKS.



AGORA: THE GATHERING PLACE


Agora: The Gathering Place is a non-profit organization that offers multi-use space for the community centered around bringing people together. Located at 504 W Broadway, Agora, Inc. was created with the purpose of providing service to the community while allowing for the continued use of the Presbyterian Church for worship. In 2019, when the Presbyterian Church experienced congregational decrease, a group of individuals saw an opportunity to use the space to further serve the community as it had in the past.

Agora is used for a variety of events, including family gatherings, and cultural and educational opportunities. In 2024, Agora received the Blue Cross Blue Shield Pathways to a Healthy Kansas Grant to make improvements to the building. This year, Agora will be hosting



a showing of *Join or Die*, a film about the importance of joining a group, and a book club, *13 Ways to Kill Your Community*, on community growth. Agora will also be hosting music concerts.

 www.facebook.com/agora.leoti

 agora.wc2021@gmail.com.



Kansas Rural Opportunity Zones

Kansas is filled with the natural beauty, simplicity and communal bonds of rural life. We want you to experience the peace and joy of rural Kansas so much that we'll even throw in some added bonuses.

The state of Kansas has designated 95 counties as "Rural Opportunity Zones," which means moving there comes with significant added benefits. Designated counties offer one or both of the following financial incentives for new full-time residents:

Student Loan Repayment Assistance

100% Personal State Income Tax Credit

Student Loan Repayment Assistance

- Administered By Kansas Department of Commerce (KDC)
- Partners with Counties, Cities, Employers, and Foundations
- Provides up to \$15,000 in Student Loan Repayment Assistance over 5 years

Eligibility Requirements

- You must have a newly established permanent address in a participating county so long as that address was established after the county began participating in the program.
- Applicants must have an active student loan balance in their name, as well as an associate's, bachelor's or post-graduate degree prior to moving to the participating county.
- To apply, you will need to provide proof of domicile in the ROZ County, proof of previous permanent residency, transcripts with degree dates and student loan balance with distribution dates.

kansascommerce.gov/roz


100% Personal State Income Tax Credit

Are you thinking about moving to Kansas, or have you recently become a resident?

New residents to Kansas who move into one of our Rural Opportunity Zones may be eligible for a 100% personal state income tax credit!

Learn more about the ROZ Tax Credit at:
ksrevenue.gov/prtaxcredits-roz.html
Email: kdor_tac@ks.gov





**WORK-LIFE
BALANCE IS
GREAT REASON
TO MOVE TO
WICHITA
COUNTY.**

**SO IS THE
FREE MONEY!**

APPLY FOR UP TO \$15,000 IN STUDENT LOAN REPAYMENT

RECREATION

WICHITA COUNTY MUNICIPAL GOLF COURSE

The 9-hole course at the Wichita County Municipal Golf Course features 3,145 yards of golf from the longest tees for a par of 36.



LEOTI SWIMMING POOL

Open during the summer, the Leoti Swimming Pool offers fun activities all week, including water aerobics, night swim, and pool parties.



LEOTI CITY PARK

The Leoti City Park has old city charm with its stone wall and picnic shelter. Offering horseshoe pits, a paved walking trail and playground equipment, it's perfect for family gatherings.



TYLER M. GRAFF MEMORIAL PARK

This park is dedicated to Tyler Graff and honors his life as a farmer, coach, and volunteer firefighter. It features a playground fire truck, tractor, basketball court, and more.



WICHITA COUNTY PARK

Enjoy many hours of play at this park, which features a basketball, soccer, tennis, and sand volleyball court, as well as a 1/4 mile paved walking trail.



CHARLIE'S MEXICAN RESTAURANT

Established in 1962, Charlie's is one of the 8 Wonders of Kansas Cuisine and serves flavorful, authentic family recipes.



DAIRY KING

Located at 412 E Broadway St., Dairy King provides outdoor seating and takeout. They cater to all ages with their kids' menu, making it an excellent choice for a family outing!

FORTANEL BAKERY

Fortanel Bakery is Leoti's one-stop eatery for amazing meals, featuring traditional dishes prepared with a vibrant mix of flavors inspired by the American and Mexican palates.



THE COUNTRY OVEN BAKERY

Near the town of Marienthal, this farm-to-table retail arm of Heartland Mill uses local ingredients in their doughnuts, breads, sweet treats, and take-n-bake options!



CHINOZ TACOS

Chinoz Tacos, a new restaurant in Leoti is a food truck and Mexican market, providing exceptional food and a menu great for the family along with breakfast and call-in orders!



DAILY DOSE

Located in the Wichita County Pharmacy, the Daily Dose serves delicious coffees, smoothies, teas, as well as pastries and sweet treats.



VIVO MART

Newly remodeled, Vivo Mart serves grab and go food and drinks, including Hot Stuff Pizza and Chester's Chicken. This convenience store also offers ice cream, pastries, and many more snacks.

PLACES TO SHOP

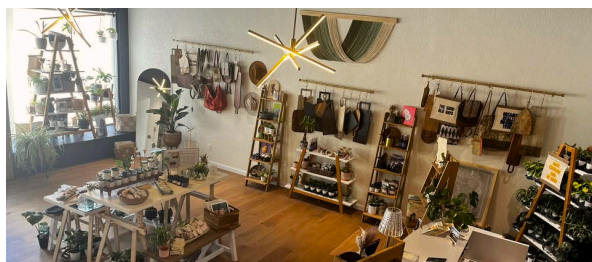
PRAIRIE FLOWER QUILT CO

Offering 2500+ bolts of fabric, books, patterns, and machine quilting services, Prairie Flower Quilt Co is a destination for quilters and seamstresses.



LEOTI FOODS

Leoti Foods is a grocery store offering a wide selection of produce, dairy, fresh cut meats, and much more. This grocery store often provides special and bulk orders, along with delivery.



BIRDIES CO.

Full of plants, art, sweet treats, care essentials, and more, Birdies is the place to go for unique gifts! The local collective is full of handmade items, giving area merchants a storefront.

HERITAGE MEATS

Heritage Meats is a family owned and operated butcher shop, offering fresh meat, as well as jams, cheeses, vegetables, and other home-grown produce.



WESTERN TRUE VALUE HARDWARE

A family-owned staple, Western Hardware offers a variety of plumbing, electrical, lawn and garden, paint, countless do-it-yourself products, power tools, lumber, building materials, appliances, and furniture.



DOUBLE BAR ONE, INC.

Double Bar One, Inc. carries a complete inventory of farrier supplies and tools, offering competitive pricing, and prompt delivery. Double Bar One is also the location of Leoti's UPS Drop-off

OTHER FEATURES

WICHITA COUNTY PUBLIC LIBRARY

The Wichita County Library provides a selection of genres for all ages, a Spanish section, interlibrary loans, and Story Time at 10:30 on Thursdays!



COMMUNITY THRIFT SHOPPE

Open from 10 A.M. to 5 P.M. on Tuesdays and Fridays, the Community Thrift Shoppe sells a variety of second-hand and donated goods.



GROW & LEARN CHILDCARE CENTER

At Grow & Learn Childcare Center, quality child care meets the needs of each child in a nurturing environment.



WESTERN STATE BANK

This bank serves seven Western Kansas communities and provides many services, including business/Ag checking, savings and loan options.



SECURITY STATE BANK

Security State Bank serves our community with a variety of agricultural, commercial, and consumer lending as well as a deposit, investment, and IRA products.



LEOTI FARMER'S MARKET

Held during the summer, the Leoti Farmer's Market offers fresh produce, beauty products, baked goods, and other items from local artisans. The market is open seasonally, on Thursdays from 5-8 p.m.



SALON 122

Salon 122 offers any beauty services you could need, from hair cuts to light therapy! Nails, lash extensions, facials, and other services can be found in this chic, modern salon! This spot for top-notch cosmetic care is new and much-loved in Leoti!

CLUBS, GROUPS, ETC.

LEOTI LAND BANK

leotilandbank@gmail.com
785-259-4475

LYDIA JAYHAWKERS 4-H CLUB

206 S 4th St
620-375-2724

MARIENTHAL MEADOWLARKS 4-H CLUB

206 S 4th St
620-375-2724

PLEASANT VALLEY BOOSTERS 4-H CLUB

206 S 4th St
620-375-2724

TRIBE BOOSTER CLUB

PO Box 73
Leoti, KS 67861

WICHITA COUNTY ARTS ALLIANCE

620-874-5062

WICHITA COUNTY A.I.M. COALITION

104 S. Indian Road
620-375-2289

WICHITA COUNTY COMMUNITY FOUNDATION

PO Box 135
620-375-5200

WICHITA COUNTY FCE

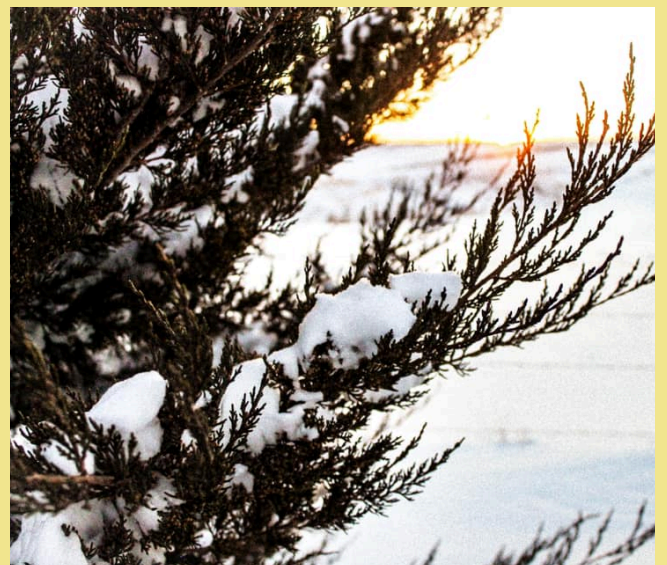
206 S. 4th St
620-379-4424

WICHITA COUNTY HISTORICAL SOCIETY

201 N. 4th St.
620-375-2316

WICHITA COUNTY OUTDOORSMEN, LLC

PO Box 122
Leoti, KS 67861



LEFT: OLD GRAIN BUILDING
RIGHT: SNOWY SCENE
PHOTOS COURTESY OF KIERSTEN DIRKS.

HEALTH CARE

GREAT PLAINS FAMILY DENTISTRY

Great Plains Family Dentistry provides high-quality dental care and offers a full range of dental services including cleanings, exams, veneers, and emergency dentistry.



FAMILY DYNAMICS

Family Dynamics is owned by Dr. Brent Porter, providing treatments, including aid to back and neck pain, headache, digestive problems, balance difficulties, and collision and sports injuries.



WICHITA COUNTY PHARMACY

Serving the community since 1996, this pharmacy provides fast, personalized service. Inside the pharmacy a well-loved gift shop and the Daily Dose.



WICHITA COUNTY HEALTH CENTER

The Health Center provides a wide selection of care services and quality healthcare to people of all ages. The Health Center offers a clinic, hospital, and long-term care.



WICHITA COUNTY HEALTH DEPARTMENT

The Health Department offers general health services including immunization, discounted blood work, foot care, monthly food distribution, labs, W.I.C services, and well-child checks. Their hours include Monday-Thursday from 8:00 to 12:00 and 1:00 to 5:00, then Friday 8:00 to 12:00.

CHURCHES

ST. ANTHONY OF PADUA'S CATHOLIC CHURCH

Catholic Church
600 S. Fourth Street, Leoti

FIRST BAPTIST CHURCH

Baptist Church
101 S Carter, Leoti

TRINITY FELLOWSHIP

Global Methodist Church
111 Wyoming St, Leoti

CHRIST COVENANT EVANGELICAL

Presbyterian Church
205 Wyoming St, Leoti

WEST BETHANY METHODIST CHURCH

Free Methodist Church
1698 Co Rd 3, Leoti

FIRST PRESBYTERIAN CHURCH

Presbyterian Church
504 W Broadway, Leoti

CARWOOD COMMUNITY CHURCH

Community Church
1003 N CR 7, Leoti

ST. MARY'S CATHOLIC CHURCH

Catholic Church
210 N 2nd, Marienthal



EVENTS



WILLIS'S RED DIRT DASH

Around the middle of June, Willis's Red Dirt Dash is a fun family event. Participants are welcome to bring a lawn chair and a beer garden is available. Join for a fun evening filled with great music and dancing!

LEOTI JUNE JAUNT

A community-wide event every June that features food trucks, inflatables, and too many activities to list!

There is always excitement for everyone!

LEOTI FALL ART WALK

In September, the Leoti Fall Art Walk brings art and community together. This free event perfect for all ages is in downtown Leoti, is alive with art ranging from sculptures to quilts. Crafts, kid-friendly activities, and snacks are also available.

CHRISTMAS IN LEOTI

The Wednesday after Thanksgiving, Christmas in Leoti is put on. Gather at the four-way for the Christmas Lighted Parade where Santa Claus makes a grand entrance, or visit local businesses open late with refreshments and sales!

EDUCATION

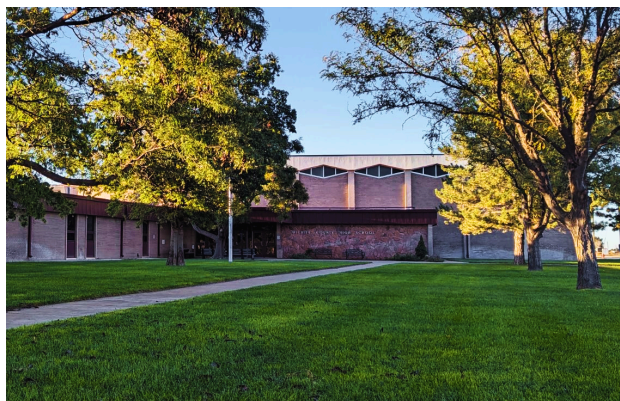
WICHITA COUNTY ELEMENTARY SCHOOL

Wichita County Elementary School educates children preschool through sixth grade in the Leoti Unified School District 467.

OUR TEACHERS ARE DEDICATED TO PROVIDING THEIR STUDENTS WITH WHAT THEY NEED TO LEARN AND GROW!



TEACHER TO STUDENT RATIO



WICHITA COUNTY JUNIOR SENIOR HIGH SCHOOL

Based off of state testing scores, Wichita County Junior-Senior High School is ranked 142nd out of 449 schools within Kansas. The high school has 16 full-time teachers and a school counselor.

ATHLETICS

Wichita County High School has a strong athletics program, bringing home many state titles in prior years!

- FOOTBALL**
- BASKETBALL**
- VOLLEYBALL**
- GOLF**
- TRACK**
- POWERLIFTING**
- WRESTLING**
- CROSS COUNTRY**

SPECIALIZED CLASSES

Wichita County Junior-Senior High School provides agriculture, art, CDL training, web page design, financial literacy, and entrepreneurship programs.

EXTRA CURRICULARS

Wichita County High School provides a number of extracurriculars to build leadership, musical talents, and knowledge.

TRAP SHOOTING SCHOLARS BOWL

- STUCCO**
- CHOIR**
- BAND**
- NHS**
- FFA**

WICHITA COUNTY FAIR

EXPERIENCE THE FUN OF MINGLING WITH BARNYARD ANIMALS, SAVORING A FUNNEL CAKE, AND WHIRLING AND TWIRLING ON THE TILT-A-WHIRL OR MERRY MIXER AT THE WICHITA COUNTY FAIR!

The Wichita County Free Fair is located at 800 East Highway 96, beginning on the last Wednesday in July and running through Saturday. The carnival operates 6pm to midnight Wednesday through Friday and Saturday noon to midnight.

The outstanding community-owned and operated carnival is packed with food, fun, and entertainment.

WITH TICKETS FOR RIDES AND GAMES AT ONLY 50¢, YOU'RE GUARANTEED THE BEST DEAL FOR THE MOST FUN!

The 100+ year old fair features many long-standing traditions such as a parade, Old Settlers' Breakfast, and a rodeo. Additional Features include commercial vendors, music, free barbecue, kids games, 4-H displays, and dances.



TOP:
ROUND-
UP RIDE.
BOTTOM:
RODEO
PICTURES
TAKEN BY
ANDREW
VANG

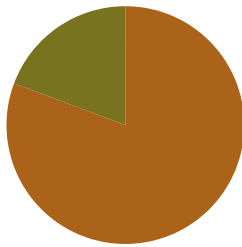
**COME ENJOY
OLD-FASHIONED
FAIR FUN!**

WICHITA COUNTY'S AGRICULTURE BUSINESS

Many Wichita County residents have connections to the ranching and farming way of life, growing a community with deep agricultural roots. The beautiful countryside is home to awe-inspiring sunsets, unique landscapes, wild life, and bountiful fields.

Farming continues to be important in the county, with 75% of land being cropland. Major crops include sorghum, wheat, corn, and oilseed. The main percentage of livestock includes cattle and swine. As of 2023, 25% of Wichita County's citizens were employed in agriculture.

Livestock and Other
19.3%



**AGRICULTURE
SALES**

Grains, Oil Seeds, Beans
80.7%

THERE ARE OVER 250 FARMS IN WICHITA COUNTY, AND ABOUT 437,940 ACRES OF FARM LAND. WICHITA COUNTY RANKS THIRTY-FIFTH OF 105 COUNTIES IN THE STATE FOR GRAINS, OILSEEDS, AND DRY BEANS AND PEAS. IT RANKS SIXTH IN THE STATE FOR CATTLE AND CALF PRODUCTION, AND SIXTH FOR POULTRY AND LIVESTOCK PRODUCTION.

PAGE SIXTEEN |
LEOTI, KANSAS



PHOTO
COURTESY
OF
KIERSTEN
DIRKS

A

ADM GRAIN
101 N County Road 2
620.375.2574

AEROFARM ENTERPRISES
www.aerofarm.com
620.874.1414

AGORA THE GATHERING PLACE
504 W Broadway
785.626.0666

AG PRO INC
547 N Hwy 25
620.874.2287

ALPHA & OMEGA REMODELING
178 E Longfellow St
816.589.8528

AMERICAN IMPLEMENT
232 E Hwy 96
620.375.2621

ASSOCIATED SERVICES
118 S Hwy 25
620.375.4324

B

BARBER SHEET METAL
118 N 4th St
620.874.5087

BAY STATION CAR WASH
106 E L St
620.375.4048

BERNING AUCTION INC
620.375.4130

BIG BEN'S SERVICE AND REPAIR
223 E Hwy 96
620.255.1305

BIRDIES CO.
122 N 4th St
620.214.0696

BLISS SALON & SPA
1201 N 7th St
620.874.0984

BLUE BIRD
212 3rd St,
Marienthal
620.243.0893

C

CARQUEST AUTO PARTS
103 N 5th St
620.375.4312

COBALT CATTLE
857 N Hwy 25
620.375.2255

CHARLIES MEXICAN RESTAURANT
510 E Broadway
620.375.4541

CHINOZ TACOS
110 E Broadway St
970.978.1338

COMMUNITY THRIFT SHOPPE
120 N 4th St
620.375.4748

CONSOLIDATED COMMUNICATIONS
844.968.7224

CURT'S SERVICE AND REPAIR
110 W Broadway
620.375.2225

D

DAIRY KING
412 E Broadway
620.375.2313

DAN'S REPAIR
224 E Hwy 96
620.375.4668

DOLLAR GENERAL
1103 E Broadway
620.371.8910

DOUBLE BAR ONE
111 N 5th St
620.375.4934

E

EISENHOUR & GRAFF ACCOUNTING
224 N 4th St
620.375.2272

ELDER FERTILIZER DBA TRI-STATE DISTRIBUTING
311 W M St
620.874.4077

ELIZABETH M. GOULD PUBLIC ACCOUNTANT
106 N 4th St
620.375.4114

E V SHOOTABLES
339 W County Road Y
620.375.2700

F

FAMILY DYNAMICS
115 N 4th St
620.375.5222

FARM BUREAU FINANCIAL SERVICES
405 N 4th St
620.375.4450

FARM SERVICE AGENCY
612 W Broadway
620.375.2332

FITNESS CENTER
112 S Indian Rd
620.375.2077

FORTANEL BAKERY
219 N 4th St
620.214.1868

G

G&D SERVICE & REPAIR
109 E St
620.375.0696

GOLDEN GRAINS INS. AGENCY
620.214.2206

GROW & LEARN CHILDCARE CENTER
302 N Indian Rd
620.375.2012

GREAT PLAINS FAMILY DENTISTRY
201 W Broadway
620.375.4533

H

HAINES CONSTRUCTION
507 S 3rd St
620.874.1398

HAPPY TAILS BOARDING
344 N Co Rd 3
620.290.2147

HARKNESS WELDING
241 E Hwy 96
620.375.2252

HEARTLAND MILL, INC
904 E Hwy 96, Marienthal
620.379.4472

HELENA AGRI-ENTERPRISES, LLC
257 S Hwy 25
620.375.2073

HERITAGE MEATS
406 E Broadway
620.375.5151

HI-PLAINS MOTEL
312 E Broadway
620.375.2239

HIGH PLAINS ENERGY
702 E Broadway
620.375.4444

HIGH POINT VETERINARY SVCS
785-687-8023

HORTON SEED SERVICES
1352 S Co Rd 21
620.214.2417

I

IRRIGATION RESOURCES
412 E J St
620.271.3806

J

**JAMES MYERS,
CHARTERED**
112 N 4th St
620.376.4140

JCY INC

504 S 4th St
620.375.2043

JK AND SONS WELDING & REPAIR LLC

151 West County Rd O
620.214.1570

JOE'S KWIK MART

410 E Hwy 96
620.375.2241

JONES CONSTRUCTION

203 E Hwy 96
620.874/0421

K**KANSAS CHILDRENS SERVICE LEAGUE**

108 W Broadway
620.375.4933

KEN'S REPAIR

105 S 5th St
620.375.4749

KIERSTEN D**PHOTOGRAPHY**

785-630-0420
kierstendirks@gmail.com

K&S TRUCKING

107 N 7th St
620.375.4909

K T TIRE & SERVICE PROS

210 E Hwy 96
620.375.5210

L**LAURA LEWIS ATTORNEY AT LAW**

112 N 4th St
620.375.2915

LEOTI AG SUPPLY

707 S 4th St
620.375.2301

LEOTI CITY HALL

406 S 4th St
620.375.2341

LEOTI CITY SHOP

401 N Wichita St
620.375.2592

LEOTI GRAIN SERVICES

303 S Indian Rd
620.214.0627

LEOTI FOODS

123 N 4th St
620.375.4319

LEOTI LIQUOR STORE

116 S 4th St
620.375.4452

LEOTI HOUSING AGENCY

200 E Olive St
620.375.2244

LUNA CONSTRUCTION

620.214.1050

M**MCKENNA CROP INSURANCE**

106 E Broadway
620.375.5262

MIDWEST CUSTOM AG AVIATION

620.375.4316

MIDWEST ENERGY

210 W Broadway
800.222.3121

MR'S BODY SHOP

102 W C St
620.375.4440

MUSEUM OF THE GREAT PLAINS

201 N 4th St
620.375.2316

N**NORTHSIDE AUTOMOTIVE NAPA**

405 N 4th St
620.375.4306

NORTON ART STUDIOS

620.874.1336

NRCS

612 W Broadway
620.375.2242

NUTRIEN AG

620.375.2058

O**OUT WEST FARM & CROPS INSURANCE INC.**

110 N 4th St
620.375.2226

P**PIONEER COMMUNICATIONS**

www.pioncomm.net
800.308.7536

PORTER'S SIGNS & DESIGNS

115 N 4th St
620.375.5222

PRAIRIE FLOWER QUILT CO

102 S Indian Rd
620.375.2044

PRICE REPAIR

101 Waters St
620.375.5215

PRICE & SONS FUNERAL HOME

202 N 4th St
620.375.2321

R**RED BARN ENTERPRISES - AXIS SEED**

1011 W Broadway St
620.872.4842

RUDY'S ELECTRIC

620.214.0140

U**UNITED STATES POSTAL SERVICE**

209 N 4th St
785.576.2192

V**VIVO MART**

101 S Hwy 25
620.375.2290

WICHITA COUNTY ECONOMIC DEVELOPMENT

Established in 1996, WCED assists in economic and community development.

SHOP LOCAL GIFT CARD

This virtual gift card helps consumers support local businesses and can be purchased on <https://bit.ly/41zoCWf>, gifted, then used locally at businesses in Wichita County.



W
WESTERN STATE BANK
102 S 2nd St
620.375.2229
**WESTERN TRUE VALUE
HARDWARE**
108 S 4th St
620.375.2227



**WHEATLAND ELECTRIC CO-
OP**
101 W F St
620.375.2632
WICHITA CO APPRAISER
206 S 4th St
620.375.4242
**WICHITA CO BUSINESS
C.A.R.E. CENTER**
102 W Broadway
620.375.2724
WICHITA CO CLERK
206 S 4th St
620.375.2731
**WICHITA CO COMMUNITY
BUILDING**
502 E M St
620.375.4646
**WICHITA CO ECONOMIC
DEVELOPMENT, INC**
106 W Broadway
620.375.2182
wced@getleoti.org
**WICHITA CO ELEMENTARY
SCHOOL**
109 N Indian Rd
620.375.2314
**WICHITA CO COMMUNITY
FOUNDATION**
104 W Broadway
wccf@wccf.us
**WICHITA CO HEALTH
CENTER**
211 E Earl St
620.375.2233
**WICHITA CO HEALTH
DEPARTMENT**
104 S Indian Rd
620.375.2289
**WICHITA CO HYDRATION
STATION**
105 N 4th St
785.623.2006
**WICHITA CO JUNIOR SENIOR
HIGH SCHOOL**
800 W Broadway
620.375.2213
**WICHITA CO MUNICIPAL
GOLF COURSE**
278 E Hwy 96
620.375.2263
WICHITA CO NATIVE SUN
102 E Broadway
620.375.2631

**WICHITA CO PARKS &
REC**
110 S Indian Rd
620.375.2077
WICHITA CO PHARMACY
111 W Broadway
620.375.2323
**WICHITA CO PUBLIC
LIBRARY**
208 S 4th St
620.375.4322
**WICHITA CO RECYCLING
CENTER**
401 E L St
620.375.5005
**WICHITA CO REGISTER
OF DEEDS**
206 S 4th St
620.375.2733
**WICHITA CO ROAD
DEPARTMENT**
501 E Broadway
620.375.2814
**WICHITA CO SENIOR
CENTER**
108 S Indian Rd
620.375.4649
WICHITA CO SHERIFF
411 S 4th St
620.375.2723
**WICHITA CO SWIMMING
POOL**
601 S 4th St
620.375.2600
**WICHITA CO TITLE
COMPANY**
112 N 4th St
620.375.2915
**WICHITA CO TREASURER
OFFICE**
206 S 4th St
620.375.2715
**WICHITA CO TIRE &
REPAIR**
211 4th St
620.375.2300
**WOOFER
CONSTRUCTION &
IRRIGATION**
109 E Broadway
620.375.2466
WOODS METAL WORKS
311 N 4th St
376.833.0920



LEFT AND BOTTOM RIGHT PHOTOS COURTESY OF SADIE BERRY

LEOTI KANSAS BOOKLET CREATED BY SADIE BERRY



TOP PHOTO COURTESY OF KIERSTEN DIRKS



WWW.GETLEOTI.ORG